

# NielsenIQ Brandbank

---

## Cadbury Curly Wurlly Chocolate Bar 5 Pack 107.5g



EAN

7622201427252

Target market(s)

GB, IE

## Components

### Ingredients

Glucose Syrup

Sugar

Palm Oil

Skimmed **Milk** Powder

Cocoa Butter

Cocoa Mass

Whey Permeate Powder (from **Milk**)

### Milk Fat

Emulsifiers (E471, Sunflower Lecithins, E442, E476)

Salt

Flavourings

Milk Chocolate: Milk Solids 14 % minimum

Contains Vegetable Fats in addition to Cocoa Butter

### Nutrition

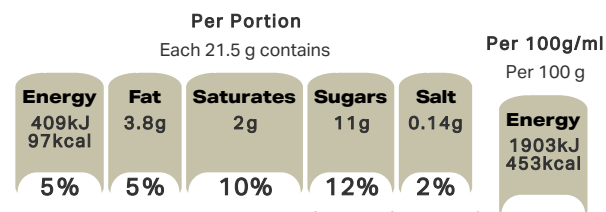
|                    | Per 100 g           | Per Bar (21.5 g)  | *Reference Intakes     |
|--------------------|---------------------|-------------------|------------------------|
| Energy             | 1903 kJ<br>453 kcal | 409 kJ<br>97 kcal | 8400 kJ /<br>2000 kcal |
| Fat                | 18 g                | 3.8 g             | 70 g                   |
| of which Saturates | 9.3 g               | 2.0 g             | 20 g                   |
| Carbohydrate       | 70 g                | 15 g              | 260 g                  |
| of which Sugars    | 49 g                | 11 g              | 90 g                   |
| Fibre              | 0.7 g               | 0.1 g             | -                      |
| Protein            | 3.0 g               | 0.6 g             | 50 g                   |
| Salt               | 0.65 g              | 0.14 g            | 6 g                    |

\*Reference intake of an average adult (8400 kJ / 2000 kcal)

### Calculated Nutrition

|                        | per 100g | Per Bar (21.5 g) |
|------------------------|----------|------------------|
| Energy (kJ)            | 1903     | 409              |
| Energy (kcal)          | 453      | 97               |
| Fat (g)                | 18       | 3.8              |
| of which saturates (g) | 9.3      | 2                |
| Carbohydrate (g)       | 70       | 15               |
| of which sugars (g)    | 49       | 11               |
| Fibre (g)              | 0.7      | 0.1              |
| Protein (g)            | 3        | 0.6              |
| Salt (g)               | 0.65     | 0.14             |

### Front of Pack Nutrition



Reference intake of an average adult (8400 kJ / 2000 kcal)

### Nutrition Other Text

Reference intake of an average adult (8400 kJ / 2000 kcal)

### Reference Intake Statement

Reference Intake Statement - Reference intake of an average adult (8400 kJ / 2000 kcal)

## Product Description

### Brand

Cadbury

### Features

97 Calories per Bar  
Suitable for vegetarians

### Standardised Brand

Brand - Cadbury

### Regulated Product Name

Milk chocolate with caramel centre (69 %).

## Marketing

### Company Name

Mondelez UK / Mondelez Ireland

### Company Address

Mondelez UK,  
PO Box 7008,  
Birmingham,  
B30 2PT.

Mondelez Ireland,  
Malahide Road,  
Coolock,  
Dublin 5.

### Third Party Logos

- Green Dot
- Tidyman

### Manufacturer Marketing

By Appointment to H.M. The Queen Cocoa and Chocolate Manufacturers Cadbury UK Ltd., Bournville.

### Other Information

Made under licence from Cadbury UK Ltd.

### Further Description

BeTreatwise.net

Cocoa Life  
Partnering with Fairtrade Foundation  
[www.cocoalife.org](http://www.cocoalife.org)

Cadbury Gifts Direct  
Gift ideas from Cadbury? visit [www.cadburygiftsdirect.co.uk](http://www.cadburygiftsdirect.co.uk) or order by phone 0845 600 3113

Cadbury World  
Have you visited Cadbury World yet? With an assortment of chocolatey zones to explore, it's great fun for all the family.  
Reservations advised. Call +44 121 393 6004 or visit [cadburyworld.co.uk](http://cadburyworld.co.uk)

## Health & Lifestyle

### Lifestyle

- Suitable for Vegetarians

### Allergy Advice

Milk - Contains

## Storage & Usage

### Storage Type

#### Type

Ambient

### Storage

Store in a dry place. Protect from heat.

## Brandbank Captured Pack Data

### Pack Size

0.05lbs e

### Numeric Size

Numeric Size - 0.05

### Pack Type

Type - Wrap

### Usage Count

Number of uses - Servings

5

### Usage Other Text

1x Bar = 1 Portion. 5 portions per pack

## Units

### Number of Units

Number of Units - 5

## Customer Services

### Manufacturers Address

Mondelez UK,  
PO Box 7008,  
Birmingham,  
B30 2PT.

Mondelez Ireland,  
Malahide Road,  
Coolock,  
Dublin 5.

### Return To

We are passionate about our great quality Cadbury products. Not completely satisfied? Please contact us:

Freephone 0800 818181 (UK only)

Mondelez UK,  
PO Box 7008,  
Birmingham,  
B30 2PT.

Mondelez Ireland,  
Freephone 1-800 678708  
Malahide Road,  
Coolock,  
Dublin 5.  
[www.cadbury.co.uk](http://www.cadbury.co.uk)

### Telephone Helpline

0800 818181 (UK)  
1-800 678708

### Web Address

[www.cadbury.co.uk](http://www.cadbury.co.uk)

