

NielsenIQ Brandbank

Cadbury Wispa Chocolate Bar 4 Pack 94.8g



EAN

7622201461201

Target market(s)

GB, IE

Components

Ingredients

Milk

Sugar

Cocoa Butter

Cocoa Mass

Vegetable Fats (Palm, Shea)

Whey Powder (from **Milk**)

Emulsifier (E442)

Flavourings

Milk Solids 14 % minimum

Cocoa Solids 25 % minimum

Contains Vegetable Fats in addition to Cocoa Butter

Allergy Text

May contain Nuts.

Nutrition

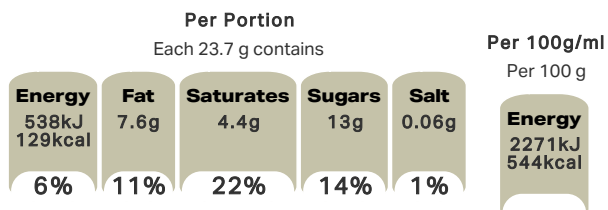
	Per 100 g	Per Bar (23.7 g)	* Reference Intakes
Energy	2271 kJ	538 kJ	8400 kJ /
	544 kcal	129 kcal	2000 kcal
Fat	32 g	7.6 g	70 g
of which Saturates	19 g	4.4 g	20 g
Carbohydrate	56 g	13 g	260 g
of which Sugars	55 g	13 g	90 g
Fibre	2.3 g	0.5 g	-
Protein	6.6 g	1.6 g	50 g
Salt	0.24 g	0.06 g	6 g

*% reference intake of an average adult (8400 kJ / 2000 kcal)

Calculated Nutrition

	per 100g	Per Bar (23.7 g)
Energy (kJ)	2271	538
Energy (kcal)	544	129
Fat (g)	32	7.6
of which saturates (g)	19	4.4
Carbohydrate (g)	56	13
of which sugars (g)	55	13
Fibre (g)	2.3	0.5
Protein (g)	6.6	1.6
Salt (g)	0.24	0.06

Front of Pack Nutrition



% reference intake of an average adult (8400 kJ / 2000 kcal)

Nutrition Other Text

% reference intake of an average adult (8400 kJ / 2000 kcal)

Reference Intake Statement

Reference Intake Statement - % reference intake of an average adult (8400 kJ / 2000 kcal)

Product Description

Brand

Cadbury

Features

100% Sustainably Sourced Cocoa
129 Calories per Bar
Suitable for vegetarians

Standardised Brand

Brand - Cadbury

Regulated Product Name

Textured milk chocolate bar.

Marketing

Company Name

Mondelez UK / Mondelez Ireland

Company Address

Mondelez UK,
PO Box 7008,
Birmingham,
B30 2PT.

Mondelez Ireland,
Malahide Road,
Coolock,
Dublin 5.

Brand Marketing

Manufacturer Marketing

By Appointment to H.M. The Queen Cocoa and Chocolate Manufacturers Cadbury UK Ltd., Bournville.

Other Information

Made under licence from Cadbury UK Ltd.

Further Description

BeTreatwise.net

Cocoa Life
Partnering with Fairtrade Foundation
Cocoa Life helps farmers get the most from their cocoa trees through environmentally friendly farming
www.cocoalife.org

Health & Lifestyle

Lifestyle

- Suitable for Vegetarians

Allergy Advice

Milk - Contains
Nuts - May Contain

Storage & Usage

Storage Type

Type

Ambient

Storage

Store in a dry place. Protect from heat.

Brandbank Captured Pack Data

Pack Size

0.05lbs e

Numeric Size

Numeric Size - 0.05

Dimension

Shelf Height (in)	Shelf Width (in)	Shelf Depth (in)
-------------------	------------------	------------------

3.46	5.94	1.1
------	------	-----

(GS1 package measurement rules)

Pack Type

Type - Wrap

Weight

Gross Weight - 0.22

New Product Development

Final Product - Not NPD

Unit Merchandising

Height - 3.46

Width - 5.94

Depth - 1.1

Unit Stackable - No

Unit Stable - Yes

Merchandise Multiple Ways - No

Shelf Ready Pack

GTIN - 07622201461188

Height - 4.21

Width - 7.01

Depth - 8.82

Weight - 2.5

Unit Count - 11

Unit Height - 0.04

Unit Width - 0.04

Unit Depth - 0.43

Merchandise Multiple Ways - No

Prototype - No

Is Case - No

Case

GTIN - 07622201461188

Height - 4.33

Width - 7.01

Depth - 8.86

Weight - 2.59

Unit Count - 11

Prototype - No

Usage Count

Number of uses - Servings

4

Usage Other Text

1x Bar = 1 Portion. 4 portions per pack

Units

Number of Units

Number of Units - 4

Customer Services

Manufacturers Address

Mondelez UK,
PO Box 7008,
Birmingham,
B30 2PT.

Mondelez Ireland,
Malahide Road,
Coolock,
Dublin 5.

Return To

We are passionate about our great quality Cadbury products. Not completely satisfied?
Please contact us: Freephone 0800 818181 (UK only)

Mondelez UK,
PO Box 7008,
Birmingham,
B30 2PT.

Mondelez Ireland,
Malahide Road,
Coolock,
Dublin 5.
www.cadbury.co.uk

Telephone Helpline

0800 818181

Web Address

www.cadbury.co.uk

