

Cadbury Caramilk Buttons 105g



EAN

7622201515393

Target market(s)

GB, IE

Components

Ingredients

Sugar
Cocoa Butter
Caramelised **MILK** Powder (Skimmed **MILK** Powder, Whey Powder (from **MILK**), Sugar, **BUTTER**, Natural Flavouring)
Whey Powder (from **MILK**)
Skimmed **MILK** Powder
MILK Fat
Emulsifier (**SOYA** Lecithins)

Nutrition

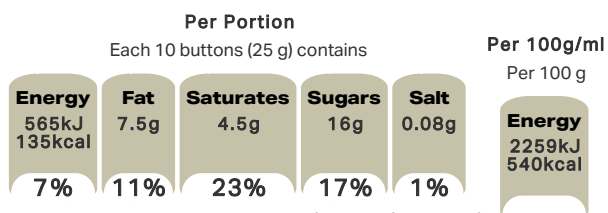
	Per 100 g	Per 10 buttons (25 g)	*Reference Intakes
Energy	2259 kJ 540 kcal	565 kJ 135 kcal	8400 kJ / 2000 kcal
Fat	30 g	7.5 g	70 g
of which Saturates	18 g	4.5 g	20 g
Carbohydrate	63 g	16 g	260 g
of which Sugars	62 g	16 g	90 g
Fibre	0 g	0 g	-
Protein	4.3 g	1.1 g	50 g
Salt	0.30 g	0.08 g	6 g

*% reference intake of an average adult (8400 kJ / 2000 kcal)

Calculated Nutrition

	per 100g	Per 10 buttons (25 g)
Energy (kJ)	2259	565
Energy (kcal)	540	135
Fat (g)	30	7.5
of which saturates (g)	18	4.5
Carbohydrate (g)	63	16
of which sugars (g)	62	16
Fibre (g)	0	0
Protein (g)	4.3	1.1
Salt (g)	0.3	0.08

Front of Pack Nutrition



% reference intake of an average adult (8400 kJ / 2000 kcal)

Nutrition Other Text

% reference intake of an average adult (8400 kJ / 2000 kcal)

Reference Intake Statement

Reference Intake Statement - % reference intake of an average adult (8400 kJ / 2000 kcal)

Product Description

Brand

Cadbury

Features

Golden Caramel Chocolate
100% Sustainably Sourced Cocoa
Suitable for vegetarians

Standardised Brand

Brand - Cadbury

Regulated Product Name

White chocolate with caramelised milk powder (7 %).

Marketing

Company Name

Mondelez UK / Mondelez Ireland

Company Address

Mondelez UK,
PO Box 7008,
Birmingham,
B30 2PT.

Mondelez Ireland,
Malahide Road,
Coolock,
Dublin 5.

Third Party Logos

- Tidyman

Further Description

BeTreatwise.net

Cocoa Life
Partnering with Fairtrade Foundation
To improve the lives of cocoa farmers & our environment
By eating Cadbury, you've been helping to fight deforestation
Thanks to Cocoa Life we are helping farms to protect the forests around them
WWW.COCOLIFE.ORG

Health & Lifestyle

Lifestyle

- Suitable for Vegetarians

Allergy Advice

Milk - Contains
Soya - Contains

Storage & Usage

Storage Type

Type

Ambient

Storage

Store in a dry place. Protect from heat.

Date Marking Type

- Best Before

Brandbank Captured Pack Data

Pack Size

0.23lbs e

Numeric Size

Numeric Size - 0.23

Pack Type

Type - Bag

Recycling Scheme

- OPRL

Recycling Other Text

Recycle with Bags at Large Supermarket - Don't recycle at home

Usage Count

Number of uses - Servings

4

Usage Other Text

1 portion = 10 pieces (25 g). Approx. 4 portions per pack

Customer Services

Manufacturers Address

Mondelez UK,
PO Box 7008,
Birmingham,
B30 2PT.

Mondelez Ireland,
Malahide Road,
Coolock,
Dublin 5.

Return To

We are passionate about our great quality Cadbury products. Not completely satisfied? Please contact us: Freephone 0800 818181 (UK only).

Mondelez UK,
PO Box 7008,
Birmingham,
B30 2PT.

Mondelez Ireland,
Freephone 1-800 678708
Malahide Road,
Coolock,
Dublin 5.
www.cadbury.co.uk

Telephone Helpline

0800 818181 (UK)
1-800 678708

Web Address

www.cadbury.co.uk

Extended Data

Description Breakdown

Variant - Caramilk Buttons

