

Cadbury Boost Duo Chocolate Bar 68g



EAN

7622210212573

Target market(s)

GB, IE

Components

Ingredients

Milk

Sugar

Vegetable Fats (Palm, Shea)

Glucose Syrup

Dextrose

Skimmed **Milk** Powder

Cocoa Butter

Cocoa Mass

Whey Powder (from **Milk**)

Wheat Flour (with added Calcium, Iron, Niacin, Thiamin)

Fat-Reduced Cocoa Powder

Humectant (Glycerol)

Emulsifiers (E442, E471, E476)

Flavourings

Salt

Thickener (Dried Cellulose)

Acidity Regulator (Potassium Carbonates)

Raising Agents (Sodium Carbonates, Tartaric Acid)

Barley Malt Syrup

Milk Chocolate: Milk Solids 14 % minimum

Contains Vegetable Fats in addition to Cocoa Butter

Allergy Text

May contain Peanuts

Nutrition

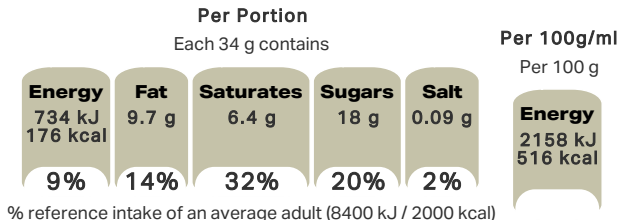
	Per 100 g:	Per Bar (34 g):
Energy	2158 kJ (516 kcal)	734 kJ (176 kcal)
Fat	28 g	9.7 g
of which Saturates	19 g	6.4 g
Carbohydrate	59 g	20 g
of which Sugars	52 g	18 g

Fibre	1.9 g	0.7 g
Protein	5.6 g	1.9 g
Salt	0.27 g	0.09 g

Calculated Nutrition

	per 100g	Per Bar (34 g):
Energy (kJ)	2158	734
Energy (kcal)	516	176
Fat (g)	28	9.7
of which saturates (g)	19	6.4
Carbohydrate (g)	59	20
of which sugars (g)	52	18
Fibre (g)	1.9	0.7
Protein (g)	5.6	1.9
Salt (g)	0.27	0.09

Front of Pack Nutrition



% reference intake of an average adult (8400 kJ / 2000 kcal)

Product Description

Brand

Cadbury

Features

Crunchy biscuit pieces, chewy caramel, all smothered in delicious Cadbury milk chocolate
 Each pack contains 2 mini bars, perfect for sharing
 The delicious pile up of tastes
 Get boosted with milk chocolate, caramel & biscuit energy
 Suitable for vegetarians

Standardised Brand

Brand - Cadbury

Regulated Product Name

2 x Milk chocolate with caramel (26 %) and biscuit (3 %) filling bars.

Marketing

Company Name

Mondelez UK / Mondelez Ireland

Company Address

Mondelez UK,
PO Box 7008,
Birmingham,
B30 2PT.

Mondelez Ireland,
Malahide Road,
Coolock,
Dublin 5.

Manufacturer Marketing

By Appointment to H.M. The Queen Cocoa and Chocolate Manufacturers Cadbury UK Ltd., Bournville.

Further Description

BeTreatwise.net

Get to know your treats

1 bar = 9 % of the RI* of kcal

*% reference intake of an average adult (8400 kJ / 2000 kcal)

Cocoa Life
Partnering with Fairtrade Foundation
www.cocoalife.org

Trademark Information

Made under licence from Cadbury UK Ltd.

Health & Lifestyle

Lifestyle

- Suitable for Vegetarians

Allergy Advice

Barley - Contains

Milk - Contains

Peanuts - May Contain

Wheat - Contains

Storage & Usage

Storage Type

Type
Ambient

Storage

Store in a dry place. Protect from heat.

Brandbank Captured Pack Data

Pack Size

0.15lbs e

Numeric Size

Numeric Size - 0.15

Pack Type

Type - Unspecified Pack

Usage Count

Number of uses - Servings

2

Usage Other Text

2 portions per pack; 2 x 34 g bars per pack

Customer Services

Manufacturers Address

Mondelez UK,
PO Box 7008,
Birmingham,
B30 2PT.

Mondelez Ireland,
Malahide Road,
Coolock,
Dublin 5.

Return To

We are passionate about our great quality Cadbury products. Not completely satisfied? Please contact us:

Freephone 0800 818181 (UK only)

Mondelez UK,
PO Box 7008,
Birmingham,
B30 2PT.

Mondelez Ireland,
Freephone 1-800 678708
Malahide Road,
Coolock,
Dublin 5.
www.cadbury.co.uk

Telephone Helpline

0800 818181 (UK)
1-800 678708

Web Address

www.cadbury.co.uk